

Radiator Grille Store

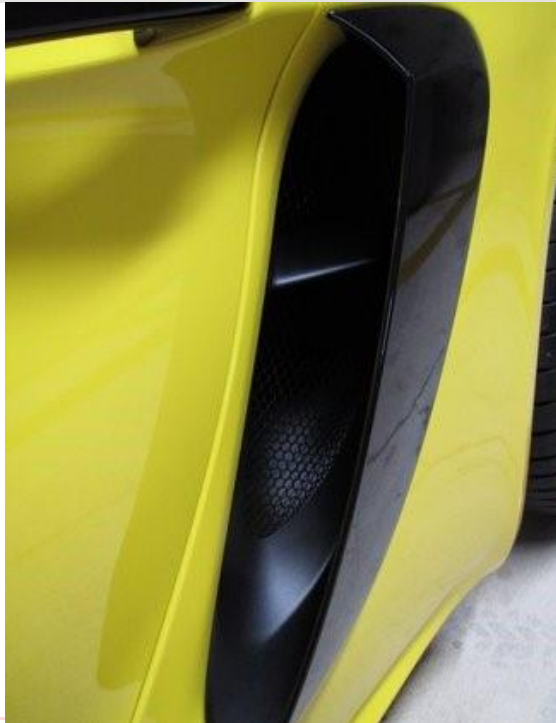
www.radiatorgrillestore.com
Naperville, IL 60564



2021+ Porsche 718 GTS, Spyder GT4 Side Intake Grille Installation Procedure



Note: it is best to protect your paint with painter's tape during the installation procedure. Though not necessary if care is taken.



Procedure

1. 718 (base, S and 2.5T GTS) and 718 GTS 4.0 INSTALLTION:

The 718 and the 718 4.0 Side Intake (GTS, Spyder and GT4) can be daunting, but it isn't that bad. The 718m GTS and Spyder allow for the side intake trim piece to be removed, grilles placed inside and replace the trim piece. Complete! Sounds simple, but the side intake trim pieces come off with high force. Use painters' tape around the edges to protect the paint and use plastic trim tools to pry the intake trim pieces. Next, place your hand inside the cavity and pull on the inner edge of the grille to create separation between the grille and the body to more easily insert the trim removal pry tool. The clips are spaced out around the intake and on the top as well (see photos below). The inner clips towards the door/body are the ones we are trying to release, see the photos below for a depiction of the clips.

2. GT4 INSTALLATION:

The GT4 is more involved but I say, more straightforward. See below for 718, 718 GTS, 718 GTS 4.0 installations, skip to step 3 for 718 GT4 installation.



Inner edge of the 718 GTS side intake shown in position on a 981



Outer edge of the 718 GTS Intake shown in position on a 981, clips are the same on all 718 side intakes.



Place tape along inner edge of body panel just next to the trim piece



Insert a trim removal tool, straight spatula works well to release the clips shown in photos above.



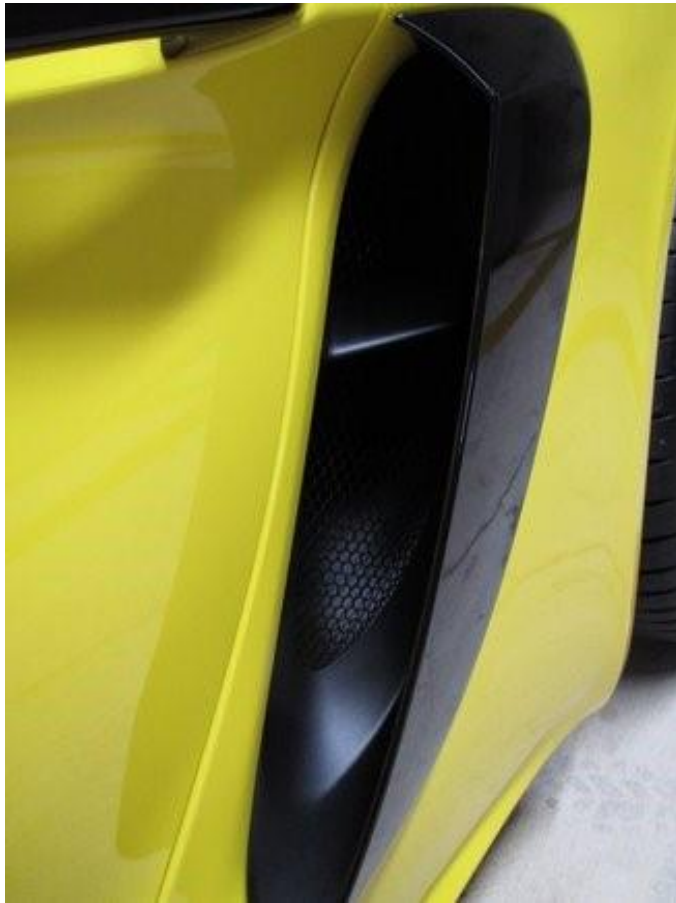
Work your way around the inner side, noting there are the alignment rigid clips all along the outer edge and one at the top edge. Once all inner clips are released, you will be able to pull the trim down and to the left to unseat the rigid clips.





Insert grille mesh into cavity and installation is reverse of removal. Insert the outer rigid clips first and then seat the inner clips.

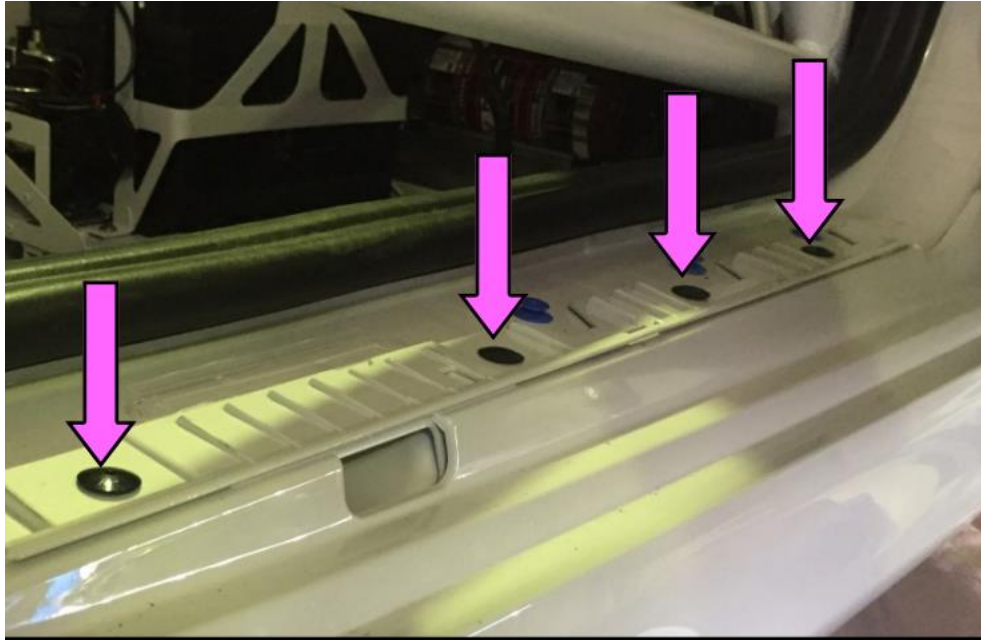
3. The GT4 requires the side sill removal, the piece that houses the trim piece and scoop and runs along the lower rocker of the car. We will highlight the GT4 installation as the GTS and Spyder only require removal of the trim pieces, install the grille, then replace the trim piece.



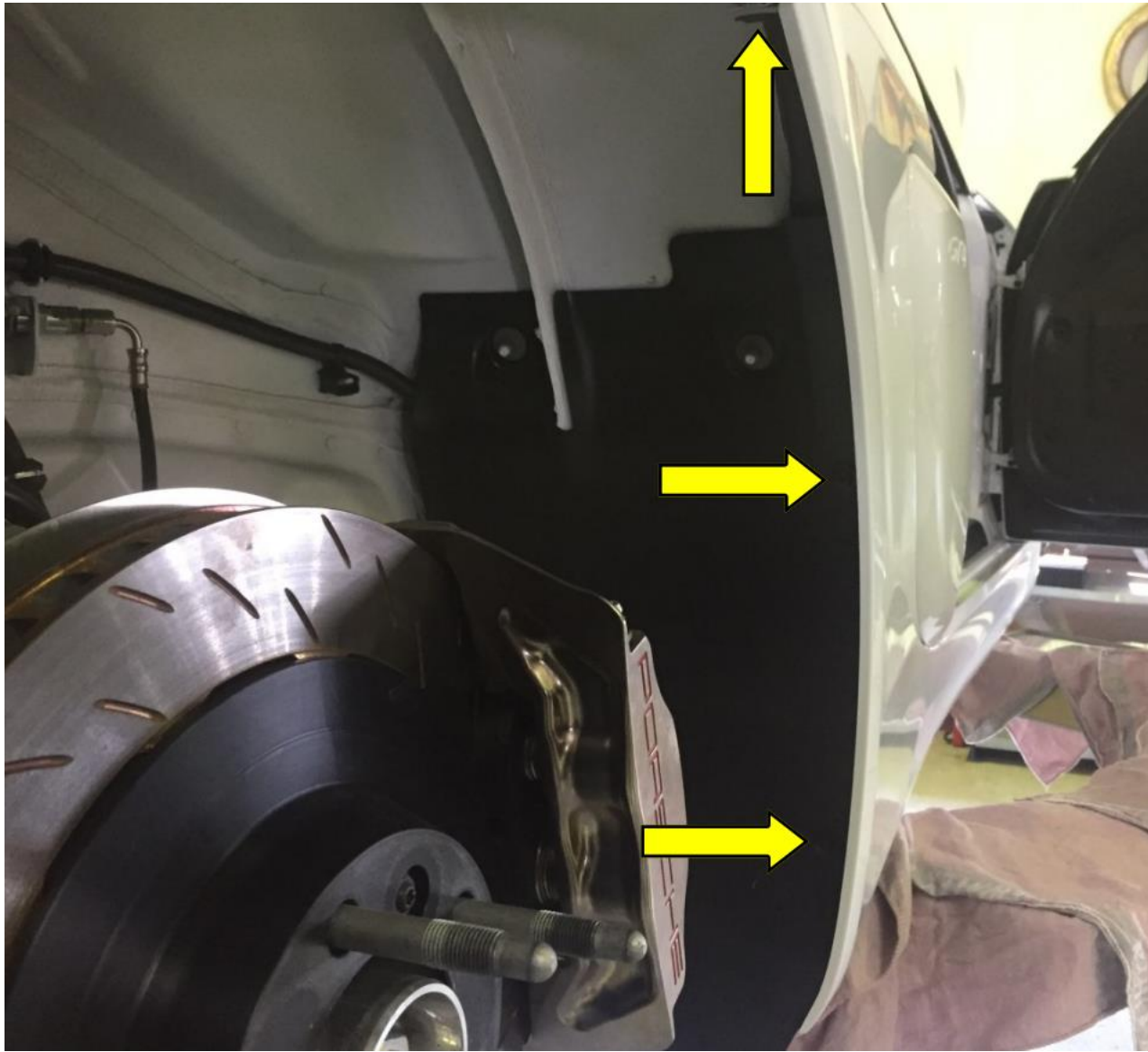
4. Remove the side sill and outer body panel that contains the scoop. This is done in multiple steps as detailed.
5. Remove the black strip with the GT4 lettering. This is held by four clips and can be simply peeled off to the side.



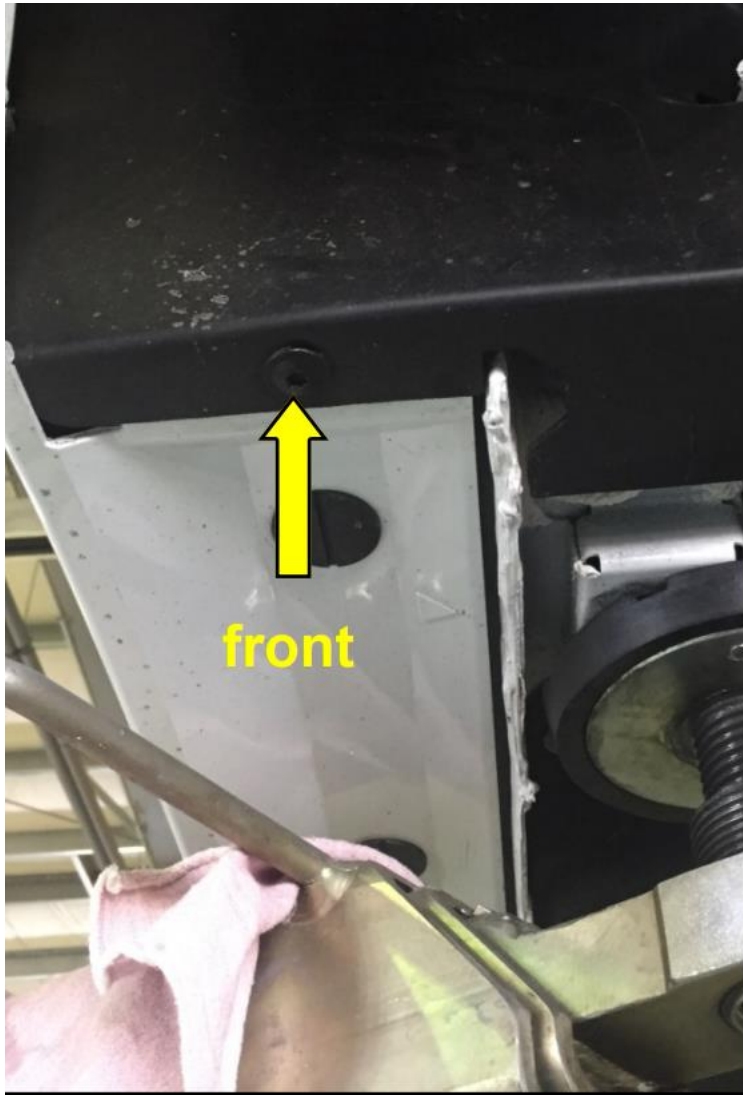
6. Remove the four black plastic spreading rivets with a suitable tool, we recommend a plastic trim removal tool.



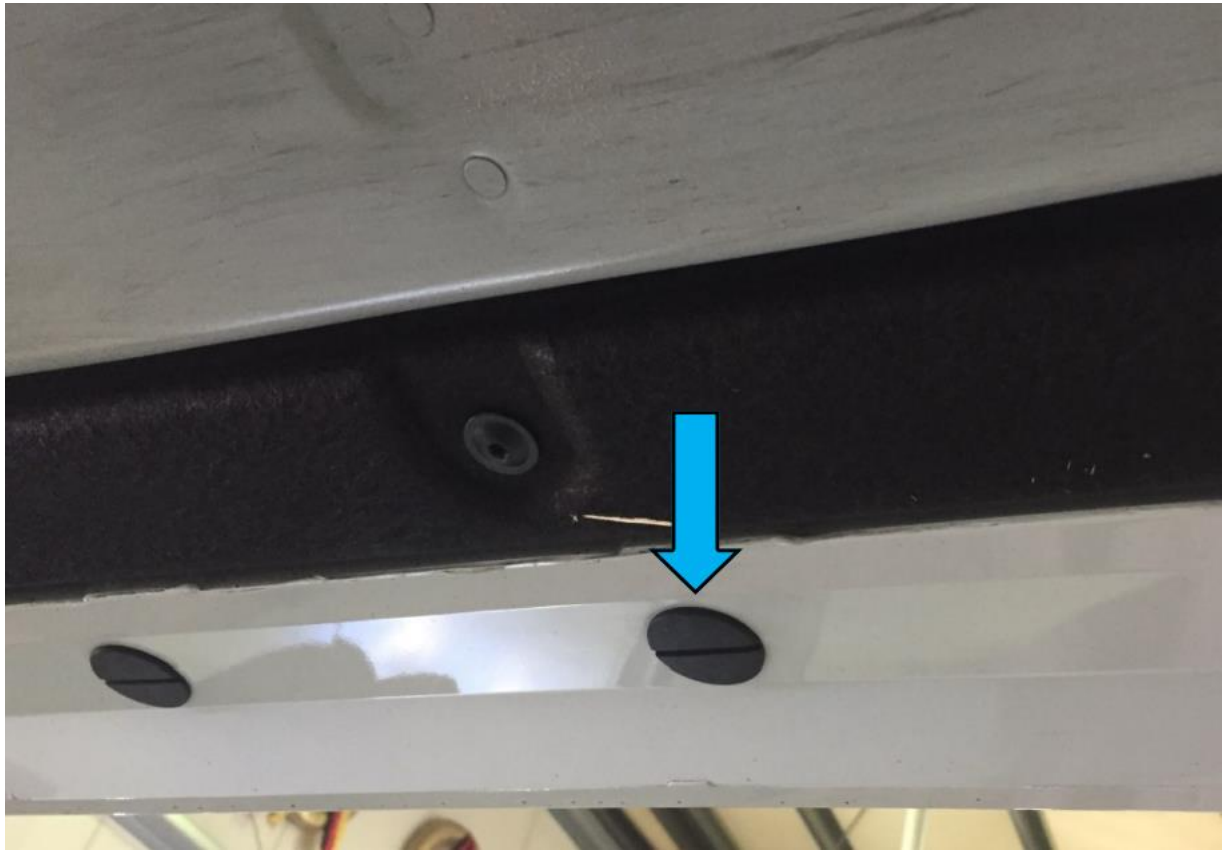
7. Remove the three screws in the rear wheel housing. Models may vary, but you will be able to find them and remove them (As shown on a 981 GT4, mounts shall be similar).



8. The door sill is fastened to the underside of the vehicle in the front and rear area with a screw. Remove them.



9. Remove all large plastic clips at the bottom of the door sill by twisting them (90°).



10. On the areas marked red, the door sill is fixed in holding strips by means of snap-in lugs. Carefully pull the door sill out of the retaining tabs.



11. Place the appropriate grille into the cavity, slip the grille over the dividing septum. Then replace the panel in the reverse order. Complete!!